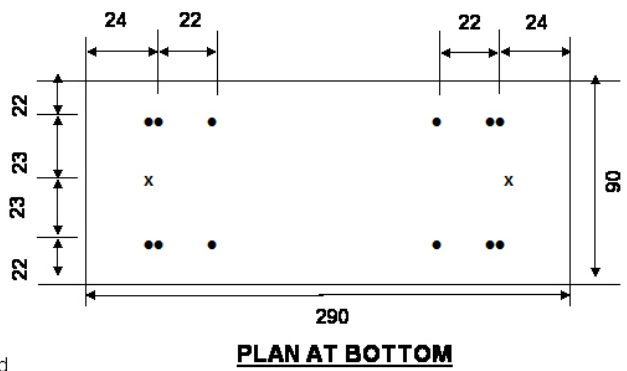
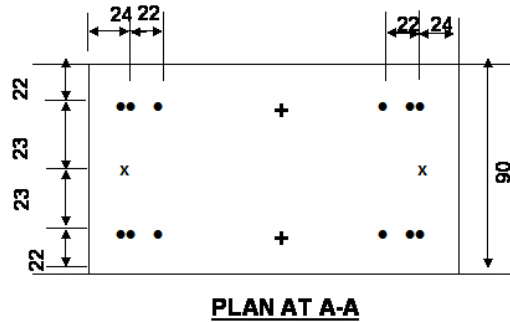
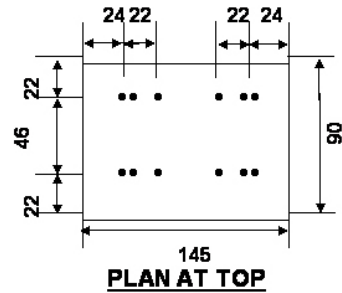
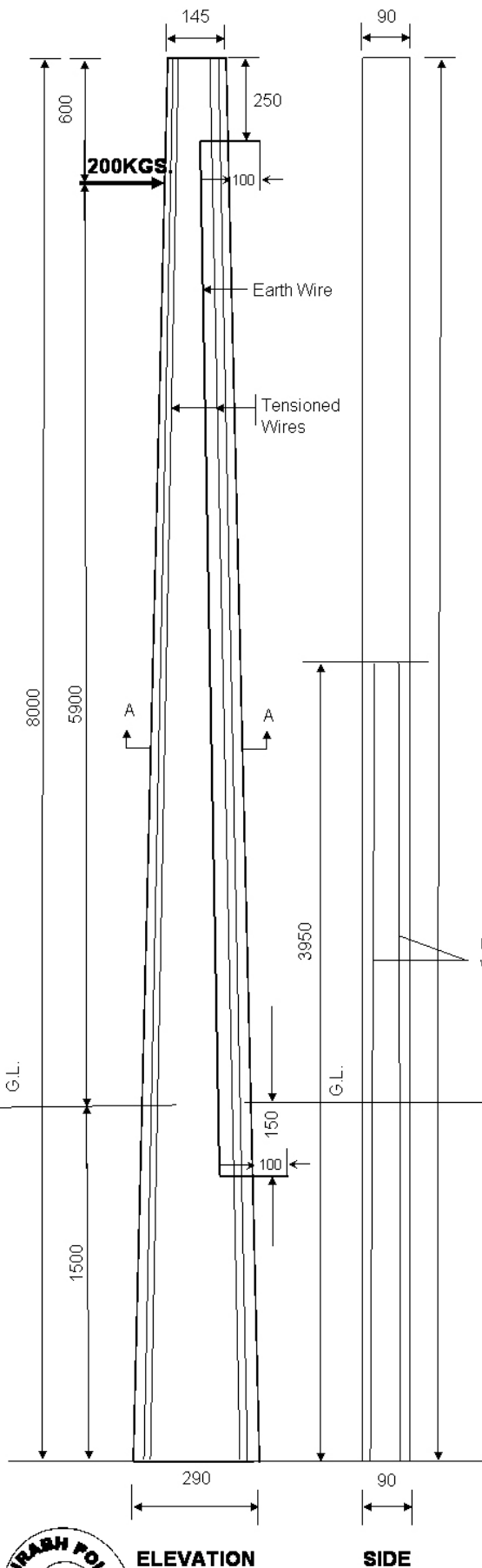


# REINFORCEMENT DETAILS OF 8.0M/200KG PRESTRESSED CEMENT CONCRETE POLES (FACTOR OF SAFETY = 2.5)



Untensioned Wires

Location of holes as per REC Standards  
 • Denotes Tensioned Wire  
 x Denotes Untensioned Wire  
 + Possible Position of Earth Wire

**TECHNICAL GUARANTEE PARTICULARS OF 8.0mtr/200KG WORKING LOAD**

<b>SECTION:</b>	
A). TOP	145 X 90 MM
B). BOTTOM	290 X 90 MM
QUANTITY OF CONCRETE	0.157M <sup>3</sup>
CONCRETE GRADE	M-420
OVERALL LENGTH SUPPORT	8.0 MTR
PLANTING DEPTH	1.5 MTR
DIA METER OF PRESTRESSING WIRE	4 MM
NUMBER OF TENSIONED WIRES	12 NOS
NUMBER OF UNTENSIONED WIRES	2 NOS
PRE-TENSIONED APPLIED TO EACH 4MM WIRE	1760KGS
MINIMUM CUBE STRENGTH OF CONCRETE AT 28 DAYS	420 KG/CM <sup>2</sup>
CLEAR COVER	20 MM
FACTOR OF SAFETY	2.5
WORKING LOAD	200 KGS
ULTIMATE LOAD	500 KGS
WEIGHT OF POLE ( THEORITICAL )	380 KGS
LOAD APPLICATION AT A POINT FROM THE TOP	600 MM
UNTIMATE TENSION STRENGTH FOR 4MM WIRE	17500KG/CM <sup>2</sup>
<b>ALL DIMENSIONS ARE IN mm - NOT TO SCALE</b>	



*Shubhraj*